

Palomino



TRAVEL TRAILERS & FIFTH WHEELS



HOULTON 2
I-95 JCT. 19
STATE LINE 65

Discover the Back Roads

THOROUGHbred • STAMPEDE



STAMPEDE TRAVEL TRAILERS

Run for the fun in this ultra lightweight hybrid travel trailer by Palomino. The Stampede features an all-aluminum superstructure that's aerodynamically designed for easy towing and handling, yet with a spacious living interior that makes the going easy. Slide-out models offer even more generous living space along with an abundance of innovative storage features. Fully furnished with home-like comforts, the Stampede is ready to run wherever the open road leads.



Model S-246



Large size appliances enhance the function and efficiency of the kitchen (Available Stainless Steel Package)



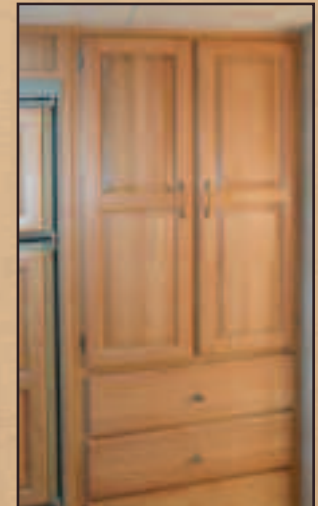
Blue



Green



Mauve



An abundance of cabinets creates lots of storage space

Stampede TT	S-15	S-17	S-195	S-21 SD	S-21 SDSL	S-21 SL	S-22 TBRG	S-235 SDSL	S-23 SDSL	S-246
Travel Length	15'3"	17'4"	TBD	21'8"	21'8"	21'8"	24'8"	23'8"	23'8"	23'8"
Exterior Width	91"	91"	91"	91"	91"	91"	91"	91"	91"	91"
Exterior Height	101"	101"	101"	101"	101"	101"	101"	101"	101"	101"
Hitch Weight	269 lbs.	326 lbs.	392 lbs.	488 lbs.	613 lbs.	482 lbs.	360 lbs.	569 lbs.	525 lbs.	435 lbs.
Axle Weight	2139 lbs.	2322 lbs.	2635 lbs.	2948 lbs.	3106 lbs.	3171 lbs.	3720 lbs.	3352 lbs.	3365 lbs.	3557 lbs.
Dry Weight	2408 lbs.	2648 lbs.	3027 lbs.	3436 lbs.	3719 lbs.	3653 lbs.	4080 lbs.	3921 lbs.	3890 lbs.	3992 lbs.
GVWR	3788 lbs.	3850 lbs.	4237 lbs.	4916 lbs.	5031 lbs.	4912 lbs.	7360 lbs.	7603 lbs.	7556 lbs.	7457 lbs.
Tire Size	14"	14"	14"	14"	14"	14"	14"	14"	14"	14"
Furnace BTU	16,000	20,000	20,000	20,000	20,000	20,000	20,000	20,000	20,000	20,000
Fresh Water	22 Gal.	38 Gal.	38 Gal.	38 Gal.	38 Gal.	38 Gal.	38 Gal.	38 Gal.	38 Gal.	38 Gal.
Grey Water	31 Gal.	31 Gal.	31 Gal.	31 Gal.	31 Gal.	31 Gal.	31 Gal.	31 Gal.	31 Gal.	31 Gal.
Black Water	28 Gal.	28 Gal.	28 Gal.	28 Gal.	28 Gal.	28 Gal.	28 Gal.	28 Gal.	28 Gal.	28 Gal.



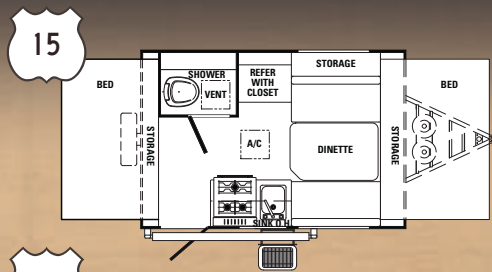
Castle Geyser, Yellowstone National Park, Wyoming



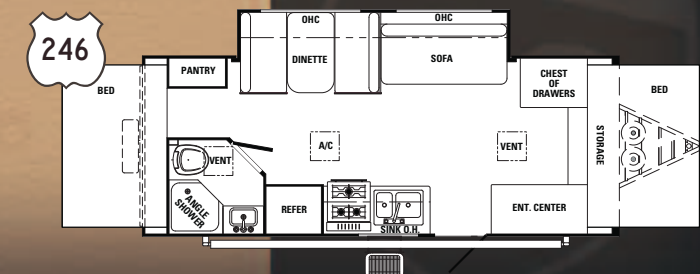
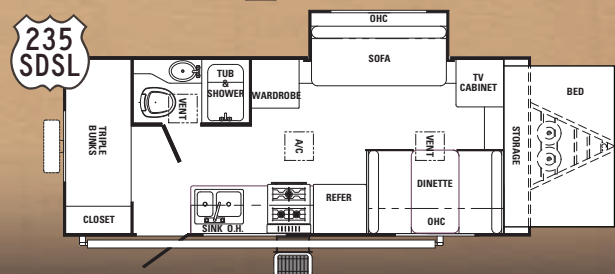
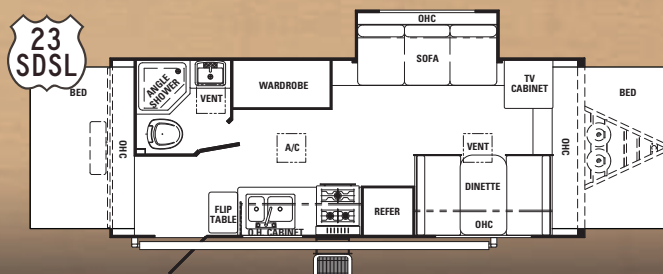
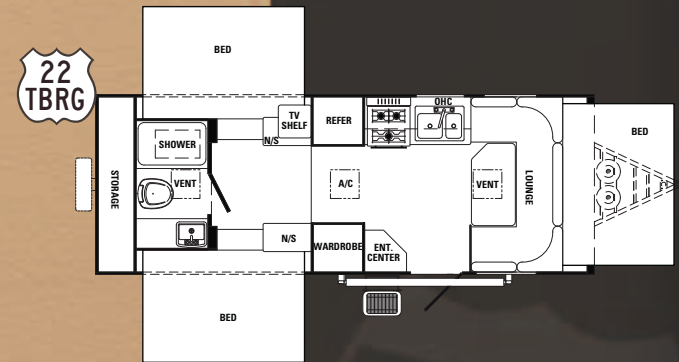
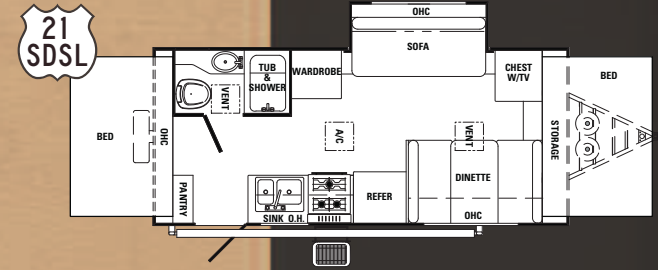
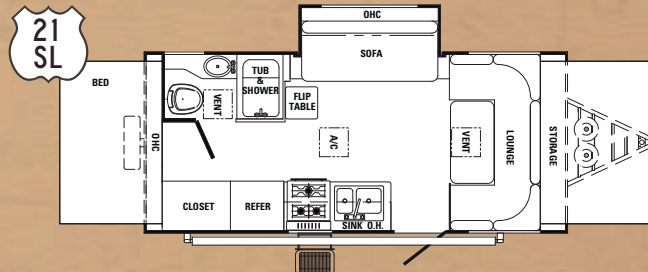
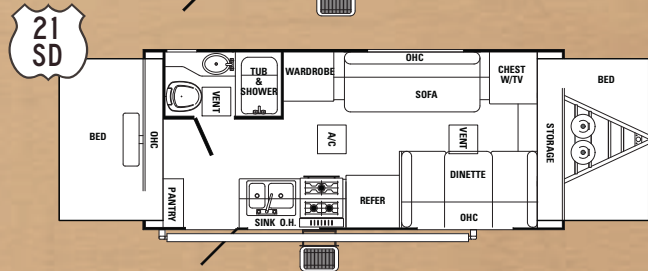
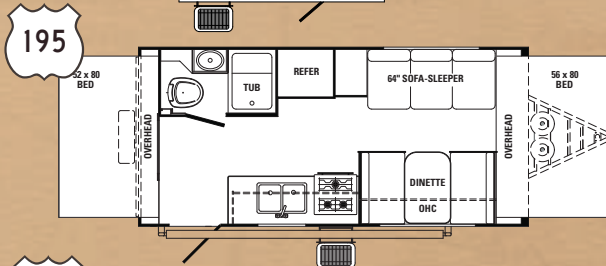
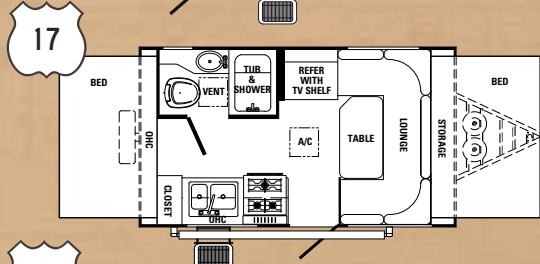
Standard Features

- Aluminum Superstructure
- Laminated Filon Fiberglass Sidewalls
- EPDM Rubber Roof
- Electric Power Slide Out System
- Independent Torsion Axle Suspension
- Ducted Furnace
- Ducted Roof Air Ready*
- Wall-Mounted Monitor Panel
- 3-Burner Gas Range
- 6-Gallon Gas/Electric DSI Water Heater
- Two 20-lb. LP Gas Bottles w/ABS Cover
- 4 B.A.L. Stabilizer Jacks w/Sand Pads
- 14" Tires
- A&E Awning
- TV Antenna w/Cable Hookup
- Tinted Safety Glass Windows
- Outside Service Lights (3)
- Oversized Bathroom Sky Light
- One-Piece Tub Surround*
- Hot and Cold Outside Shower
- Designer Valances w/Lambrequin Arms
- Fabric Window Shades
- Spare Tire, Carrier and Molded Cover
- One-Piece Sink Cover
- Stove Cover
- Bunk Light w/Fan
- Wired for Cable & Satellite
- Wired for Phone
- Aluminum Framed Dinettes

*Standard on select models



Three flap system



Old Farm, Spangle, Washington



THOROUGHBRED TRAVEL TRAILERS

Lightweight strength and sleek styling form the classic look of the Thoroughbred. Designed for easy towing and handling, these ultra light travel trailers are quality built with an all aluminum superstructure for road tough durability. A wide choice of roomy floor plans, each equipped with convenient amenities, offers quality accommodations that your family deserves.



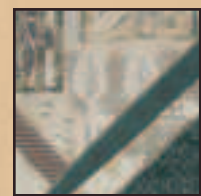
Model T-271



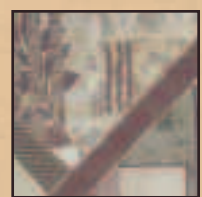
Model T-271



Blue



Green



Maive



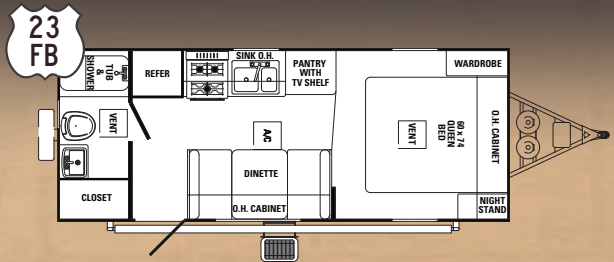
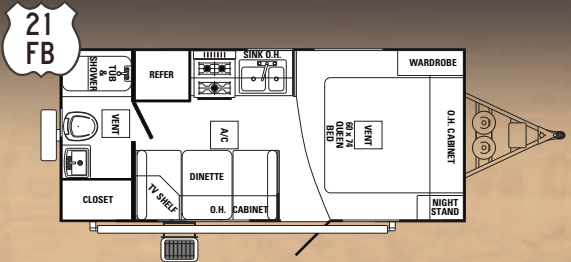
Stone



Autumn in the Park, Prior Lake, Minnesota

Thoroughbred TT	T-21FB	T-21FBSL	T-23FB	T-23BH	T-25FBSL	T-26BHSL	T-257	T-261	T-262	T-271	T-275
Travel Length	21'8"	21'8"	23'8"	23'8"	25'3"	26'9"	25'8"	27'2"	28'8"	31'2"	29'8"
Exterior Width	91"	91"	91"	91"	91"	91"	91"	91"	91"	91"	91"
Exterior Height	101"	101"	101"	101"	101"	101"	101"	101"	101"	101"	101"
Hitch Weight	348 lbs.	349 lbs.	231 lbs.	369 lbs.	383 lbs.	328 lbs.	454 lbs.	373 lbs.	537 lbs.	401 lbs.	572 lbs.
Axle Weight	2907 lbs.	3210 lbs.	3176 lbs.	3115 lbs.	3649 lbs.	3881 lbs.	3365 lbs.	3472 lbs.	3826 lbs.	4433 lbs.	4212 lbs.
Dry Weight	3255 lbs.	3559 lbs.	3407 lbs.	3484 lbs.	4032 lbs.	4209 lbs.	3819 lbs.	3845 lbs.	4363 lbs.	4834 lbs.	4784 lbs.
GVWR	4761 lbs.	4772 lbs.	4793 lbs.	7348 lbs.	7406 lbs.	5788 lbs.	7467 lbs.	7396 lbs.	7565 lbs.	7422 lbs.	7472 lbs.
Tire Size	14"	14"	14"	14"	14"	14"	14"	14"	14"	14"	14"
Furnace BTU	20,000	20,000	20,000	20,000	20,000	20,000	20,000	20,000	20,000	20,000	20,000
Fresh Water	38 Gal.	38 Gal.	38 Gal.	38 Gal.	38 Gal.	38 Gal.	38 Gal.	38 Gal.	38 Gal.	38 Gal.	38 Gal.
Grey Water	31 Gal.	31 Gal.	31 Gal.	31 Gal.	31 Gal.	31 Gal.	31 Gal.	62 Gal.	31 Gal.	31 Gal.	31 Gal.
Black Water	28 Gal.	28 Gal.	28 Gal.	28 Gal.	28 Gal.	28 Gal.	28 Gal.	28 Gal.	28 Gal.	28 Gal.	28 Gal.

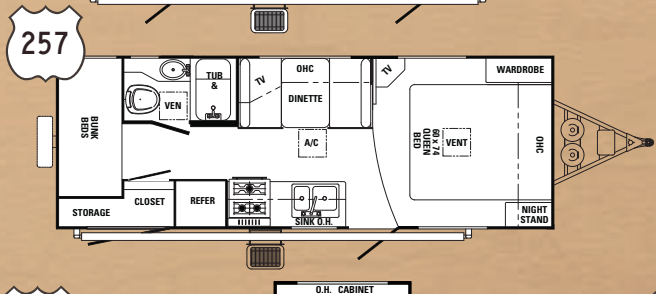
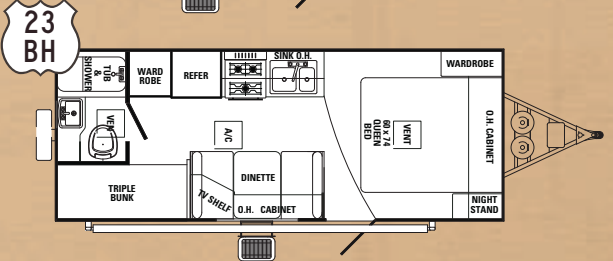
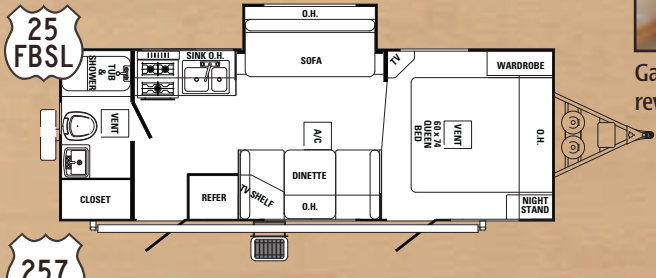
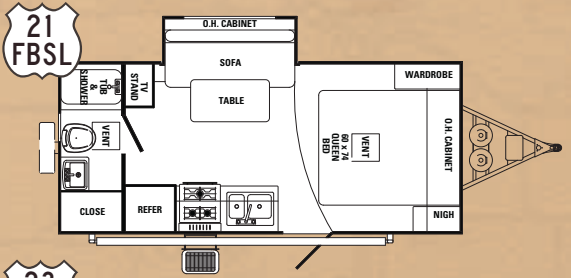




Gas support struts lift the bed to reveal a large storage area

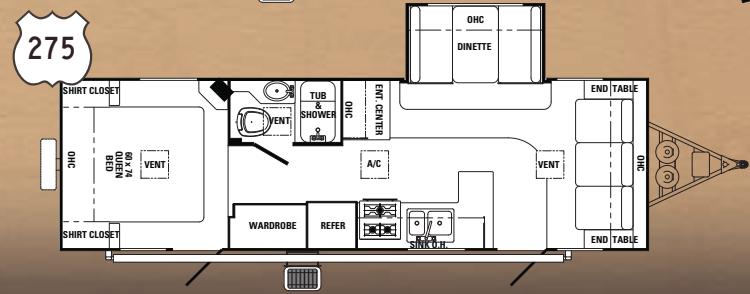
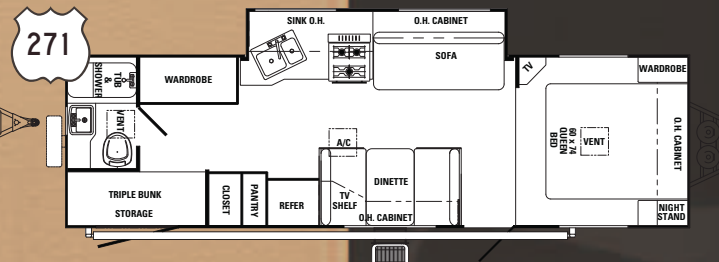
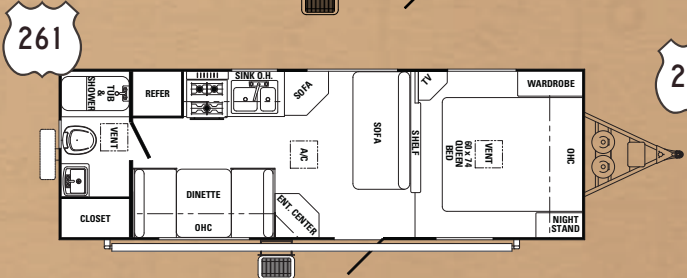
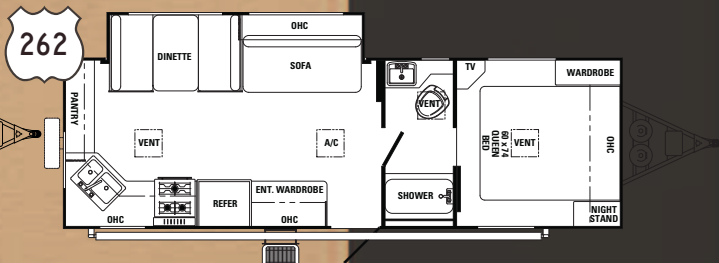
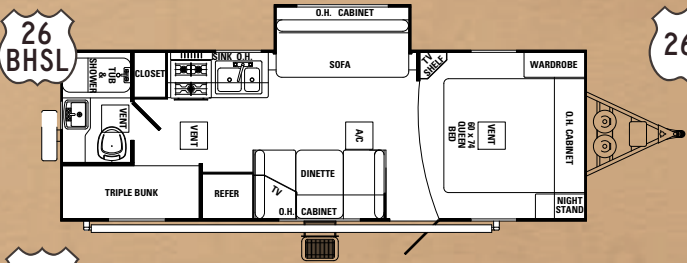


Ha Ha Tonka Castle ruins near Lake of the Ozarks, Missouri



Standard Features

- Aluminum Superstructure
- Laminated Filon Fiberglass Sidewalls
- EPDM Rubber Roof
- Independent Torsion Axle Suspension
- Electric Power Slide Out System
- Ducted Furnace
- Ducted Roof Air Ready
- Wall-Mounted Monitor Panel
- 3-Burner Gas Range
- 6-Gallon Gas/Electric DSI Water Heater
- Two 20-lb. LP Gas Bottles w/ABS Cover
- 4 B.A.L. Stabilizer Jacks w/Sand Pads
- 14" Tires
- A&E Awning
- TV Antenna w/Cable Hookup
- Outside Service Lights (3)
- Oversized Bathroom Sky Light
- One-Piece Tub Surround
- Hot and Cold Outside Shower
- Designer Valances w/Lambrequin Arms
- Fabric Window Shades
- Spare Tire, Carrier and Cover
- Stove Cover
- One-Piece Sink Cover
- Wired for Cable & Satellite
- Spare Tire, Carrier and Molded Cover
- Aluminum Framed Beds and Dinette Seats
- Wired for Phone





THOROUGHBRED FIFTH WHEELS

For the ultimate in lightweight towability, luxury, and affordability, the Thoroughbred fifth wheel line is unmatched. Thoroughbred fifth wheels are built with an all aluminum frame, laminated fiberglass superstructure that's superior in strength without adding excess weight. The interior pampers you in the sophisticated style of a high end unit without the high price. A great value for your investment, Thoroughbred fifth wheels offer the best in RV living.



Thoroughbred 5W	824RL	826RK	829RL	829BH	829RK
Travel Length	26'2"	26'2"	29'5"	30'5"	29'5"
Exterior Width	96"	96"	96"	96"	96"
Exterior Height	11'10"	11'10"	11'10"	11'10"	11'10"
Hitch Weight	1287 lbs.	1232 lbs.	1346 lbs.	1396 lbs.	1280 lbs.
Axle Weight	4895 lbs.	4863 lbs.	5186 lbs.	5378 lbs.	5450 lbs.
Dry Weight	6182 lbs.	6095 lbs.	6532 lbs.	6774 lbs.	6730 lbs.
GVWR	10087 lbs.	10104 lbs.	10150 lbs.	10131 lbs.	10080 lbs.
Tire Size	15"	15"	15"	15"	15"
Furnace BTU	30,000	30,000	30,000	30,000	30,000
Fresh Water	38 Gal.	38 Gal.	38 Gal.	38 Gal.	38 Gal.
Grey Water	36 Gal.	72 Gal.	36 Gal.	36 Gal.	72 Gal.
Black Water	36 Gal.	36 Gal.	36 Gal.	36 Gal.	36 Gal.



Wisconsin River, Wisconsin Dells Area

Standard Features

- Aluminum Superstructure
- Laminated Filon Fiberglass Sidewalls
- EPDM Rubber Roof
- Spring Axle Suspension System
- Flush Floor Slide Outs
- Electric Power Slide Out System
- Ducted Furnace
- Ducted Roof Air Ready
- Wall-Mounted Monitor Panel
- Enclosed Under Belly
- Thermostatically Controlled Heated Under Belly
- 3-Burner Gas Range
- 6-Gallon Gas/Electric DSI Water Heater
- Two 30-lb. LP Gas Bottles
- 15" Tires
- A&E Awning
- TV Antenna w/Cable Hookup
- Outside Service Lights (3)
- Outside Scare Lights (2)
- Bathroom Sky Light
- One-Piece Tub Surround
- Hot and Cold Outside Shower
- Designer Valances w/Lambrequin Arms
- Spare Tire, Carrier and Cover
- Stove Cover
- One-Piece Sink Cover/Cutting Board
- Neo-Angle Shower*
- China Toilet w/Spray Attachment
- 8 Cubic Foot Refrigerator
- Triple Step
- Lend-A-Hand Entry Assist Handle
- Deluxe Pillow Top Mattress
- Swivel Chairs*
- Designer Pillow Shams
- Day/Night Window Shades
- Wired for Phone
- Wired for Cable & Satellite

*Standard on select models



Blue



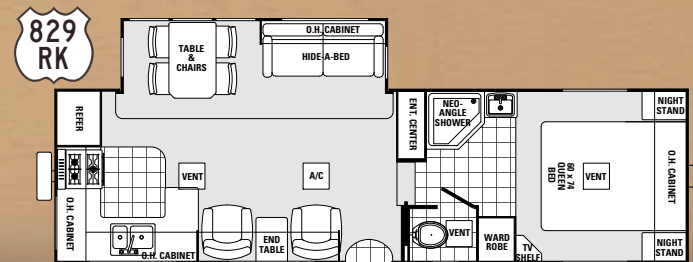
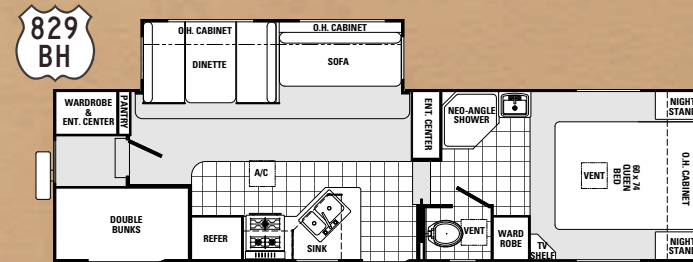
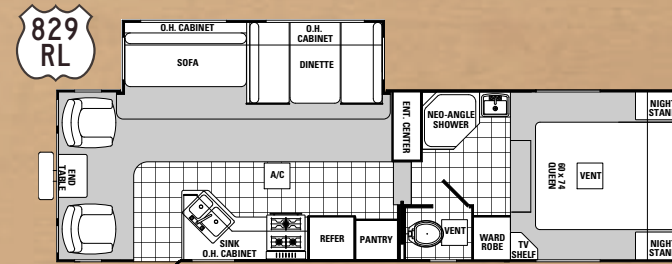
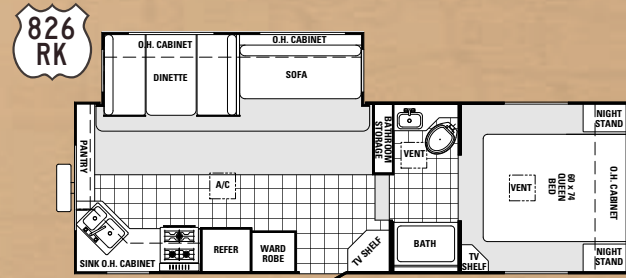
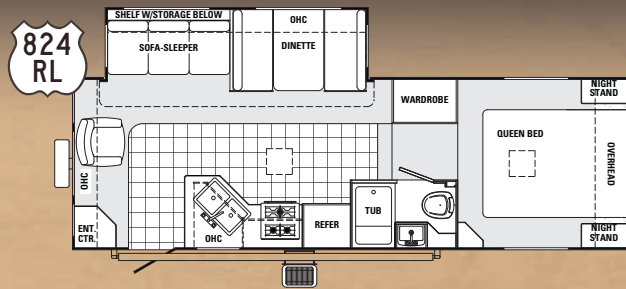
Mauve



Green



Stone



Sunset on Lake Michigan, Grand Haven, Michigan

Thoroughbred fifth wheels come in five roomy slide-out models. Each one is packed with standard features that add value and enjoyment for a great RV experience. A choice of four designer color schemes lets you select the decor that reflects your personal style.

STANDARDS & OPTIONS



Designer window treatments with fabric shades



Aluminum wheels



Molded bottle cover protects the LP bottles and battery



An outside shower w/hot & cold water makes cleaning up a breeze and keeps dirt and mess outside



AM/FM CD player w/cassette or AM/FM CD player w/DVD and 5.1 Dolby digital surround sound



3 speed Create-A-Breeze™ fan



The water filter will filter all incoming water



Grilling area with table



Jacks with sand pad



Slideout storage drawer



Double entry steps



Hitch light for your convenience



13,500 BTU air conditioner



Outside electrical receptacle



Dinette seats and beds are framed in aluminum



Many models have convenient outside storage



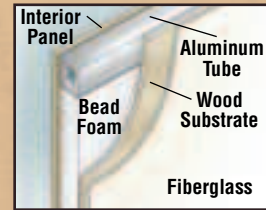
Water hookup



Palomino's exclusive three flap system on the tent assembly provides not only a great seal but also provides extra protection for small children while in the bed area.



Ducted roof air in a laminated roof offers excellent cooling throughout.



Lamination diagram

All illustrations and specifications contained in this literature are based on the latest product information at time of publication. Vanguard LLC reserves the right to make changes in price, colors, materials, equipment and specifications and to discontinue models at anytime without notice or obligation and assumes no responsibility for any error in this literature.

Palomino Travel Trailers and Fifth Wheels are designed to meet the varied needs of the customer. It is the responsibility of the owner to select the proper load combination for their individual needs without exceeding the listed axle weight capacities.

WARRANTY: TENT WARRANTY – Vinyl tents manufactured by Vanguard LLC are warranted for 5 years to the original owner. Free from defect in materials and workmanship under normal use and service.
 EPDM Rubber Roof – 12 Years
 Frame – 5 Years
 Fiberglass Skin – 2 Years
 AL-KO Torsion Axle – 5 Years
 General Camper Coverage – 1 Year
 Structural – 3 Years



Vanguard LLC

31450 M-86 West • Colon, MI 49040
 Phone: (269) 432-3271 • Fax: (269) 432-2516
www.palominoRV.com

DEALER