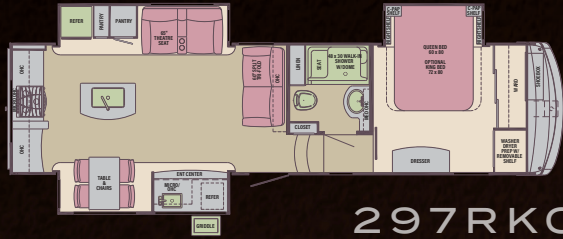
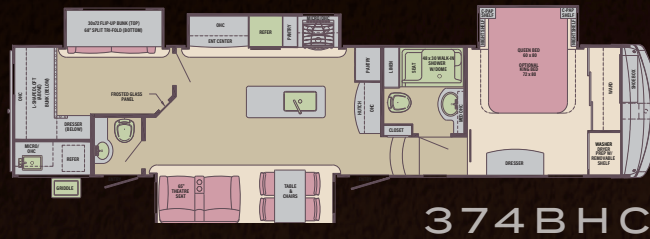


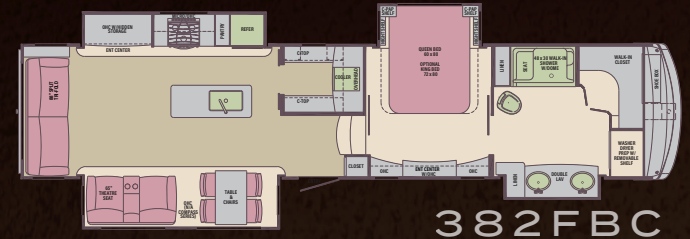
COLUMBUS COMPASS SERIES



297RKC



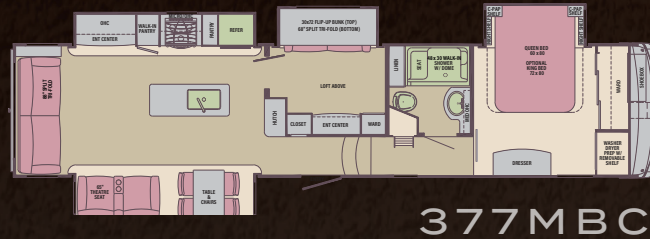
374BHC



382FBC



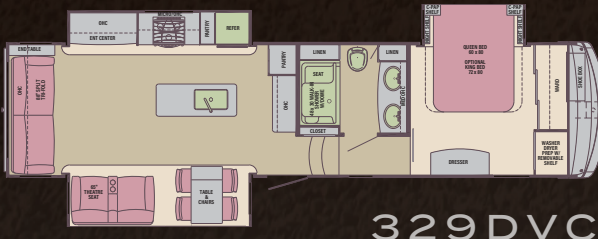
298RLC



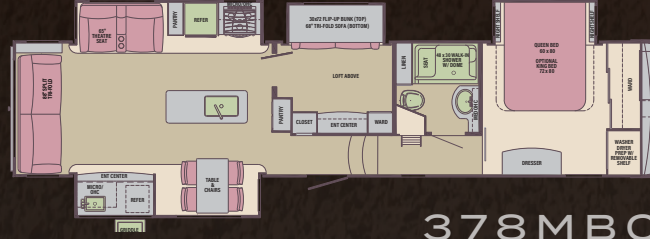
377MBC



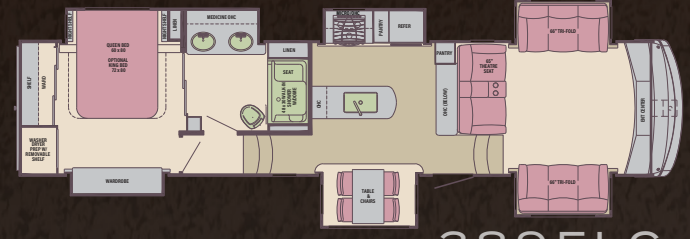
383FBC



329DVC



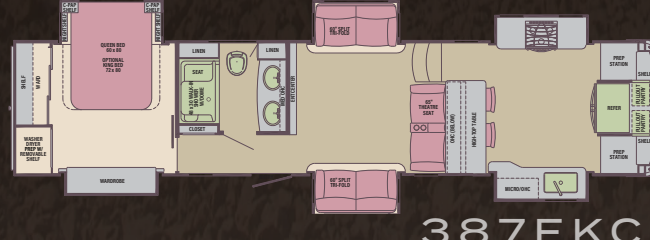
378MBC



389FLC



366RLC



387FKC

EXPLORE THE
ULTIMATE FIFTH WHEEL



▶ Visit www.palominorv.com for additional photos and information

	CMF297RKC	CMF298RLC	CMF329DVC	CMF366RLC	CMF374BHC	CMF377MBC	CMF378MBC	CMF382FBC	CMF383FBC	CMF387FKC	CMF389FLC
HITCH WEIGHT	2134	2269	2086	1779	2357	2283	2184	2533	2417	2263	2769
UVW	11107	11298	11457	11540	12785	12609	12990	13080	12265	12650	13138
GVWR	14107	14298	14457	14540	15785	15609	15990	16050	15557	15800	16138
CCC	3000	3000	3000	3000	3000	3000	3000	2970	3292	3150	3000
OVERALL LENGTH	35' 5"	35' 5"	37' 6"	38' 7"	41' 2"	41' 2"	41' 2"	41' 2"	41' 2"	41' 2"	41' 2"
EXT. HEIGHT (w/o 2nd AC)	12' 4"	12' 4"	12' 4"	12' 4"	12' 4"	12' 4"	12' 4"	12' 4"	12' 4"	12' 4"	12' 4"
EXT. WIDTH	101"	101"	101"	101"	101"	101"	101"	101"	101"	101"	101"
FRESH WATER (gal.)	75 gal	75 gal	75 gal	75 gal	75 gal	75 gal	75 gal	75 gal	75 gal	75 gal	75 gal
GREY WATER (gal.)	78 gal	71 gal	71 gal	71 gal	71 gal	71 gal	71 gal	78 gal	78 gal	78 gal	75 gal
BLACK WATER (gal.)	39 gal	39 gal	39 gal	39 gal	78 gal	39 gal	39 gal	78 gal	78 gal	39 gal	39 gal
AWNING SIZE	16'	16'	17'	18' & 11'	16'	20'	10' 6" & 20'	11' & 12'	11' & 12'	19'	20'

CONSTRUCTION

- 101" wide body
- All welded aluminum frame superstructure
- Drop Frame pass-thru storage compartments
- 5/8 tongue-groove plywood floor
- R40 Residential 5" radius Wood Truss Roof
- 6"6" height slides (living area slides)
- (5) heat ducts out of traffic areas
- Snap-in ceiling molding-no staples or tape
- 12V heat pads on all holding tanks
- R38 floor insulation
- R40 roof insulation
- R11 sidewall insulation
- Vacuum Bonded Walls
- Lippert Axles
- 16" wheels w/nitro fill tires
- Rear View camera prep
- Slide topper prep

INTERIOR

- Large tinted windows throughout
- Hidden hinges
- Dovetail constructed reinforced doors and drawers w/ upgraded hardware
- Upgraded crack/mold/mildew-resistant flooring
- Upgrade true solid surface countertops in kitchen
- LED lights
- Residential crown molding throughout unit
- Solid Wood Slide Fascia
- 24 ounce carpet
- Pleated night shades
- Large entry closet for jacket & shoe storage

EXTERIOR

- Slam latches on all storage doors
- Magnetic Compartment Door Holds
- 2-tone aluminum wheels
- 2-tone wheel well skirting
- Painted fiberglass front cap
- Heated utility convenience center
- Black tank flush
- Outside FM/Bluetooth receiver with USB port
- Electric rear stabilizer jacks
- Outside shower
- 2-30 lb LP tanks with auto switch
- Quick battery disconnect
- Power awning w/LED lighting
- 7000 lb axles (all models)
- Crank down spare tire
- Tire pressure monitoring system
- 2" Hitch receiver

FURNITURE

- Power w/USB charging residential theater seating w/storage
- Bi-fold 80" Sleeper sofa (per model)
- Residential high end dining chairs with storage

BEDROOM

- Laundry hamper (most models)
- TV hooks w/ wall backer
- 6 Drawer storage dresser
- Innerspring mattress
- French mirrored sliding closet doors
- High end bedspread & pillows
- Reading lights w/ USB charger
- 13.5 Coleman Serenity bedroom A/C

APPLIANCES

- Upgrade 8 cu ft refrigerator w/adjustable temp settings and raised panel doors
- 50" LED TV w/Radio
- 10 gallon water heater w/quick recovery
- Washer / dryer prep
- Full system water purifier
- 30" residential microwave
- 22" 3 burner gas range
- 15,000 BTU Coleman Serenity A/C
- 35,000 BTU furnace
- Omnidirectional rooftop antenna w/ 4G LTE/ Wifi prep
- 50 AMP Converter w/ built-in Charge Wizard
- 1000W Inverter w/ Res. Refer

KITCHEN

- Full size pantry
- Storage for sink covers (some models)
- Recessed solid surface sink covers
- Residential under counter storage
- Recessed glass range cover
- Residential backsplash
- Additional lighting above sink area
- Large single bowl stainless steel sink
- Single lever faucet w/pull out sprayer
- Trash can with dedicated storage (some models)

BATHROOM

- 48"x30" one piece fiberglass shower w/seat & built in shelves for toiletries
- Under sink storage
- 3 speed power vent
- Porcelain toilet
- Additional storage cabinet (some models)

OPTIONS

- Electric fireplace
- 6 Point Hydraulic Level Up
- Euro Style Entry Handle
- MCD Night Roller Shades
- Kitchen Maxx Fan w/Rain sensor
- 20cu ft residential refrigerator w/Inverter
- 18 cu ft gas electric refrigerator
- King bed
- Memory Foam mattress
- Wood-look floor
- Tile-look floor
- Metal wrapped awning
- 175" Goodyear H rated tires w/upgraded rims
- 200 Watt Solar Panel (installed) w/2 Batteries
- Mor/Ryde Step Above Entry step (forced)

- **Compass package (forced option) includes:** Full System Water Purifier, 50" LED TV, Battery Disconnect, FM/Bluetooth w/2 Exterior Speakers, Hardwood Slide Out Fascia, 2 Tone Alum Wheels, G-rated Tires, 12V Heat Pads on Tanks, LED Awning Lights, Syphon 360 Vent Covers, Pleated Day/Night Shades, 4 Step Entry, Friction Hinge Entry Door, Go Power Solar Prep, Pull Down Faucet, Ladder

TOWABLES DEFINITIONS

GVWR (Gross Vehicle Weight Rating) - is the maximum permissible weight of the unit when fully loaded. It includes all weights, inclusive of all fluids, cargo, optional equipment and accessories. For safety and product performance do NOT exceed the GVWR.

SAWR (Gross Axle Weight Rating) - is the maximum permissible weight, including cargo, fluids, optional equipment and accessories that can be safely supported by a combination of all axles.

UVW (Unloaded Vehicle Weight)* - is the typical weight of the unit as manufactured at the factory. It includes all weight at the unit's axle(s) and tongue or pin and LP Gas. The UVW does not include cargo, fresh potable water, additional optional equipment or dealer installed accessories. *Estimated Average based on standard build optional equipment.

CCC (Cargo Carrying Capacity)** - is the amount of weight available for fresh potable water, cargo, additional optional equipment and accessories. CCC is equal to GVWR minus UVW. Available CCC should accommodate fresh potable water (8.3 lbs per gallon). Before filling the fresh water tank, empty the black and gray tanks to provide for more cargo capacity. **Estimated average based on standard build optional equipment

Each Forest River RV is weighed at the manufacturing facility prior to shipping. A label identifying the unloaded vehicle weight of the actual unit and the cargo carrying capacity is applied to every Forest River RV prior to leaving our facilities. The load capacity of your unit is designated by weight, not by volume, so you cannot necessarily use all available space when loading your unit.



PALOMINO
 COLUMBUS BY PALOMINO
 A Division Of Forest River, Inc.
 105-1/2 C.R. 14 • Middlebury, In 46540
 Www.palominoRV.com



Learn More
 Scan this barcode using a QR Reader on your smart phone to learn more about Forest River.



All information contained in this brochure is believed to be accurate at the time of publication. However, during the model year, it may be necessary to make revisions and Forest River, Inc., reserves the right to make all such changes without notice, including prices, colors, materials, equipment and specifications as well as the addition of new models and the discontinuance of models shown in this brochure. Therefore, please consult with your Forest River, Inc., dealer and confirm the existence of any materials, design or specifications that are material to your purchase decision.

©2019 Palomino RV. A division of Forest River, Inc., a Berkshire Hathaway Company. 9/19 Columbus