

PUMA XLE LITE

BY PALOMINO - SINCE 1968

Toy Haulers



Travel Trailers



Ultra Lites



FOR THE ADVENTURES OF A LIFETIME



PUMA

ULTRA LITE

GREAT TIMES COME IN SMALL PACKAGES

Puma's NEW Ultra Lite models expand the product offering with single axle, 7' wide models, that can be towed by crossover vehicles and smaller SUVs. They've been developed based on demand for lighter weight, eco-friendly models with great fuel efficiency and maximum towability.

*Convenience
Center panel
controls slides,
awning, interior
and porch
lights, water
pump/heater;
shows battery/
tank capacities.*



PUMA ULTRA LITE TRAVEL TRAILERS AND TOY HAULER

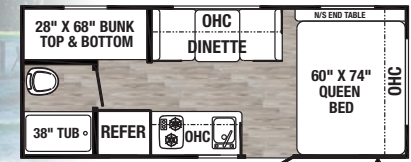
ULTRA LITE BUNK MODELS

Start your camping adventures right with a Puma Ultra Lite! These value-added campers are standard equipped with Schwintek slide outs. 18 SSX is shown here with a space saving fold-down bunk. There's LED lighting, convenient USB charging ports and contemporary black hardware throughout. This galley includes a single bowl sink with high-rise faucet, a stainless steel 11 cu. ft., 12V residential refrigerator and a two-burner gas stove with a decorative backsplash. Long-lasting, abrasion resistant surf(x)[®] 3D, one-piece, seamless countertops and resilient Beauflor[®] flooring maintain their "like new" appearance. Keep cool with a 13,500 BTU air conditioner. AM/FM/CD/DVD Bluetooth Stereo, WiFi and solar prep are all included. An optional TV is shown.

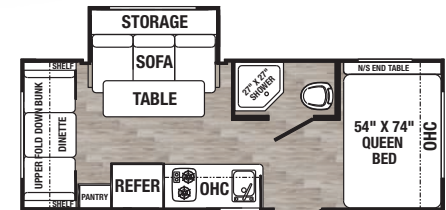


	BUNK MODELS			
ULTRA LITE	16 BHX	18 RDX	18 SSX	187 TH
Hitch Weight	370	455	425	535
Axle Weight	2745	3315	3620	2965
UVW	3144	3799	4074	3529
GVWR	3870	4855	4825	4935
CCC (Cargo Cap.)	725	1055	750	1406
Exterior Length	21' 4"	23'	22' 7"	22' 7"
Exterior Height w/AC	9' 11"	10' 1"	10' 1"	10' 1"
Exterior Width	84"	84"	84"	84"
Fresh Water Cap. (gal)	34	34	34	34
Black Water Cap. (gal)	30	30	30	30
Grey Water Cap. (gal)	30	30	30	30
Tire Size (in)	14"	15"	15"	15"
Awning Size (ft) OPT.	12'	14'	14'	14'

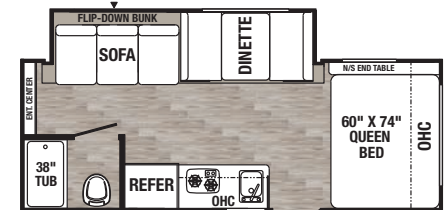
Refer to back cover for chart definitions.



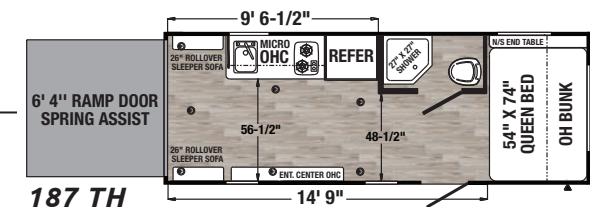
16 BHX



18 RDX



18 SSX



187 TH

ULTRA LITE TOY HAULER

BUNK MODEL

ULTRA LITE PACKAGES

Ultra Lite Package (Required)

- Aluminum Solid Double Step
- Outside Shower
- Spare Tire & Carrier
- 13,500 BTU Non-Ducted A/C
- Power Tongue Jack
- AM/FM/CD/DVD Stereo
- 55 Amp Converter
- Front Diamond Plate
- Electric Awning

Ultra Leader Package (Required)

- Stainless Steel Microwave
- Stainless Range Hood
- 2 Exterior Speakers
- 11 Cu. Ft. 12V Residential Refrigerator
- Tub Surround
- Bedspread with Pillows
- Solar Prep
- TV Antenna
- Cable Hook-up

- Tinted Windows
- Night Shades
- Super Lube Axle
- Front & Rear Stabilizer Jacks
- Beauflor Linoleum
- Bath Skylight
- 6 Gal Gas/Electric DSI Water Heater
- LED Lighting
- TV Hook-up
- WiFi Prep



ULTRA EASY LIVING

Pack-up for a quick weekend getaway, or a trip to your favorite vacation spot. This 16 DSX front bedroom has a large tinted windshield, a walk-around queen bed, mirrored shirt wardrobes and nightstands. Stow away extra gear and supplies in handy overhead cabinets and under bed storage.

With generous, long-lasting, abrasion resistant surf(x)[®] 3D, one-piece, seamless countertops, cooking up a quick meal is a breeze. This galley includes a single bowl sink with high-rise faucet, a stainless steel 11 cu. ft., 12V residential refrigerator and a two-burner gas cook top. Easy to clean Beauflor[®] flooring maintains its "like new" appearance.

PUMA ULTRA LITE STANDARD FEATURES

EXTERIOR

- Friction Hinged Radius Entry Doors
- Smooth, Radius Front Metal with Diamond Plate
- Large Front Frameless Window (Most models)
- Powder Coated Frames
- Super Lube Axles
- Tinted Safety Glass
- Clamp Ring Windows
- Pass-Thru Storage (Where applicable)

- Alpha Superflex Roof – 12 Year Manufacturer's Limited Warranty
- Rain Gutters with Large Down Spouts
- ABS Automotive Style Fender Skirts*
- Radius Baggage Doors
- Darco Wrapped Underbelly
- 5/8" Floor Decking (25 Year manufacturer's limited warranty)
- 2" x 2" Flush Floor Joists on 12" Centers
- 1-30 Lb. Gas Bottle

- Schwintek Slide System with Manual Override (Small models)
- Clamp Ring Luggage Doors
- Back-up Camera Prep
- Solar Prep

INTERIOR

- 78" Interior Height
- 20,000 BTU Furnace
- USB Charging Ports
- Decorative Kitchen Backsplash
- Spice Rack (Kitchen)
- Divided Silverware Drawer

- Nickel Finish, Single Control Gooseneck Kitchen Faucet
- Glass Range Cover
- Built-in Knife Rack
- LED Ceiling Lights
- 30 Amp Converter with Battery Charger
- Jack Knife Sofa with Pull-down Center Drink Tray – Storage Underneath*
- Wood Medicine Cabinet with Mirrored Door*
- Power Vent in Bath

- 27" x 27" Radius Shower w/Door*
- 24" x 40" Tub/Shower*
- 12V Shower LED Light
- 60" x 74" Queen Beds (Most models)
- Upgraded Soft Teddy Bear Bunk Mats
- Shirt Closet in Front Bedrooms*
- Two Interior Decors
- Contemporary Hardware, Light & Bath Fixtures
- Dinette Seat Bases with Storage

- Residential Carpet with Pad
- Designer Window Treatments (Living room)

SAFETY FEATURES

- CO₂ Detector
- LP Leak Detector
- Fire Extinguisher
- Smoke Detector

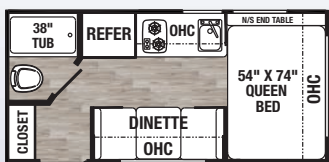
*Available on select models.

PUMA

ULTRA LITE

FOR THE ADVENTURES OF A LIFETIME

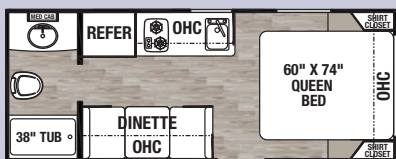
The 16 DSX has a 84" U-dinette with a dual pedestal table that converts to a comfortable sleeping area, plus there's even more storage under the seats. Stock up the large pantry for a long stay. There are privacy enhancing night shades, LED lighting, convenient USB charging ports and contemporary black hardware throughout.



12 FBX



16 DSX



16 QBX

NON-BUNK MODELS

ULTRA LITE	12 FBX	16 DSX	16 QBX
Hitch Weight	410	415	380
Axle Weight	2400	3270	2715
UVW	2839	3714	3124
GVWR	3910	4815	3880
CCC (Cargo Cap.)	1070	1100	755
Exterior Length	18' 4"	22' 4"	21' 4"
Exterior Height w/AC	9' 11"	10' 1"	9' 11"
Exterior Width	84"	84"	84"
Fresh Water Cap. (gal)	34	34	34
Black Water Cap. (gal)	30	30	30
Grey Water Cap. (gal)	30	30	30
Tire Size (in)	14"	15"	14"
Awning Size (ft) OPT.	10'	14'	13'

Refer to back cover for chart definitions.



Contemporary two-tone, slide out fascia and residential valances frame this spacious slide out. Stardust decor shown.



PUMA XLE LITE

LIGHT WEIGHT CONSTRUCTION

Construction features include solid I-beam frames, one-piece 5/8" floor decking and lightweight Alpha Superflex roofing. Smaller slide models offer the Schwintek slide system, while larger models use the rack and pinion slide system. Both of these reliable systems have manual override and provide superior sealing.



Smooth, aerodynamic radius front metal. Two-tone exterior metal adds curb appeal



The sofa center panel in this private bunk house has a fold-down drink tray. The upper bunk locks above for added head room. The opposing side has built-in bunk ladder, shirt wardrobe, plus standard TV prep for movies and video games. Bunks are rated for 300 lbs. and include USB charging ports.



Gather around for a great time. The family-friendly 31 BHSC's 84" radius U-dinette converts to a comfortable sleeping area. Spacious sliding windows let in plenty of light and fresh air. Spread out and relax! The sofa features a flip-down drink tray and has handy storage below. Access large pot and pan storage from both sides of the L-galley. Surf(x)® 3D, one-piece, seamless countertops house an undermount sink with cover and a single lever faucet. The 17" oven with LED backlit controls and a glass range cover includes a 3-burner stove.

PUMA XLE LITE STANDARD FEATURES

EXTERIOR

- Friction Hinged Radius Entry Doors
- Smooth, Radius Front Metal with Diamond Plate
- Large Front Frameless Window (Most models)
- Powder Coated Frames
- Super Lube Axles
- Tinted Safety Glass
- Clamp Ring Windows
- Pass-Thru Storage (Where applicable)
- Alpha Superflex Roof – 12 Year Manufacturer’s Limited Warranty
- Rain Gutters with Large Drop Spouts
- ABS Automotive Style Fender Skirts
- Radius Baggage Doors
- Darco Wrapped Underbelly
- 5/8" Floor Decking (25 Year manufacturer’s limited warranty)
- 2" x 3" Flush Floor Joists on 12" Centers
- 2-20 Lb. Gas Bottles
- Rack & Pinion Electric Slide System with Manual Override (Large models)
- Schwintek Slide System with Manual Override (Small models)
- Clamp Ring Luggage Doors
- Back-up Camera Prep
- Solar Prep

- Decorative Kitchen Backsplash
- Spice Rack (Kitchen)
- Divided Silverware Drawer
- Nickel Finish, Single Control Gooseneck Kitchen Faucet
- Undermount Stainless Steel Sink
- Glass Range Cover
- Built-in Knife Rack
- LED Ceiling Lights
- 55 Amp Converter with Battery Charger
- Jack Knife Sofa with Pull-down Center Drink Tray – Storage Underneath (Most models)
- Wood Medicine Cabinet with Mirrored Door
- Power Vent in Bath
- Glass Shower Door*
- 12V Shower LED Light
- 60" x 74" Queen Beds
- Upgraded Soft Teddy Bear Bunk Mats
- Shirt Closet in Front Bedrooms
- Two Interior Decors
- Satin Nickel Hardware, Light & Bath Fixtures
- Square Dinette Seat Bases with Storage
- Residential Carpet with Pad
- Designer Window Treatments (Living room)

SAFETY FEATURES

- CO₂ Detector
- LP Leak Detector
- Fire Extinguisher
- Smoke Detector

*Available on select models.

PUMA XLE LITE PACKAGES

Value Leader Package (Required)

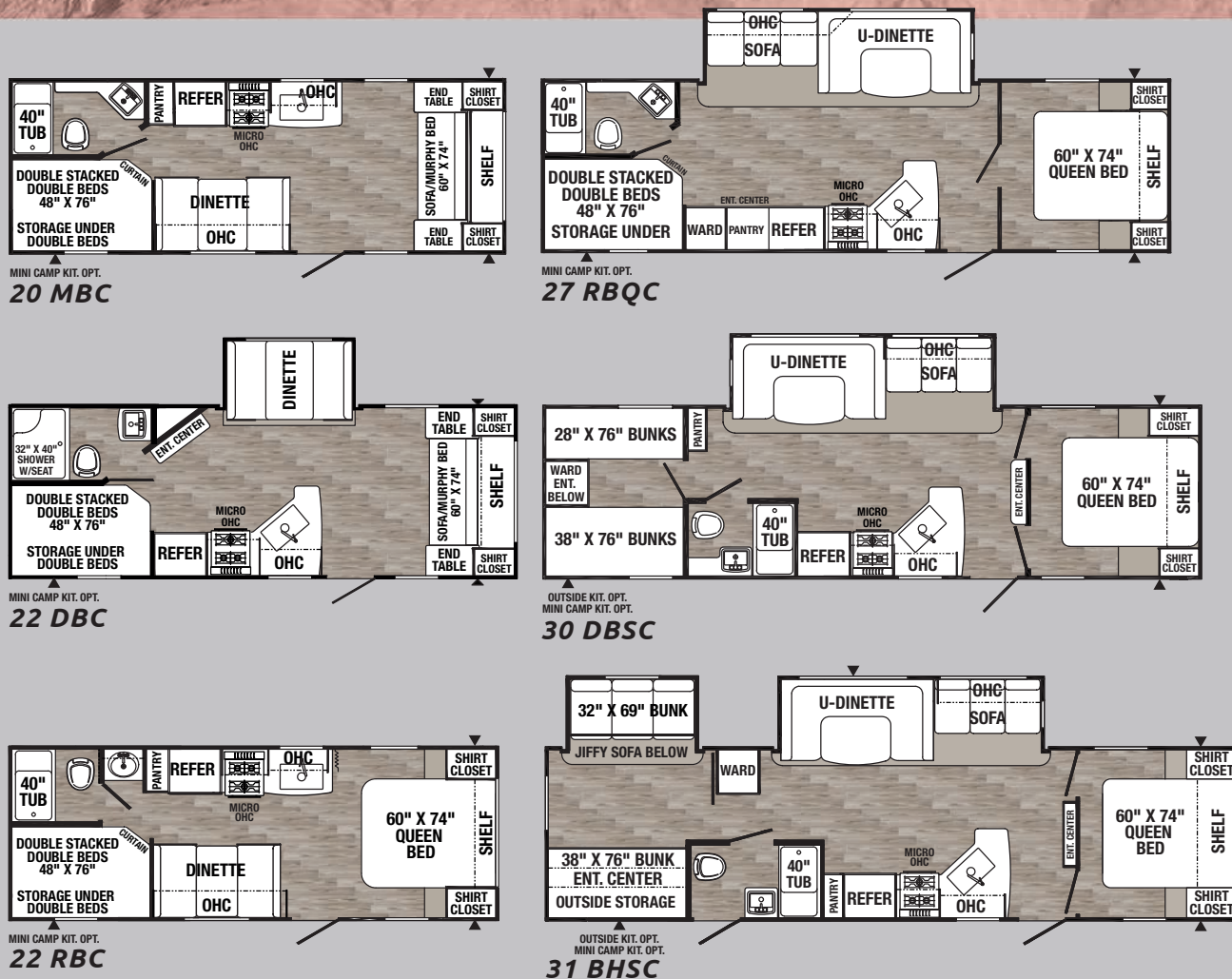
- Tub Surround
- Bedspread with Pillows
- TV Antenna with Cable Hook-up
- Tinted Windows
- Super Lube Axles
- Front & Rear Stabilizer Jacks
- Beauflor Linoleum
- Bath Skylight
- LED Lighting
- Bedroom TV Hook-up
- WIFI Prep
- Solar Prep

Elite Package (Required)

- Electric Awning
- Oven & Range Hood
- Stainless Steel Microwave
- AM/FM/CD/DVD Stereo
- 2 Exterior Speakers
- Outside Shower
- Spare Tire
- Front Diamond Plate
- 13,500 BTU Ducted A/C
- 6 Gal Gas/Electric Water Heater
- Night Shades
- Aluminum Solid Steps
- 11 Cu. Ft. Residential Refrigerator

Electric Power Package (Optional)

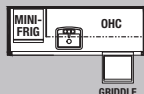
- 4 Electric Stabilizer Jacks • 3500 lb Electric Tongue Jack



TRAVEL TRAILER OPTIONS

Available on select models.

OUTSIDE KITCHEN OPTION W/ GRIDDLE



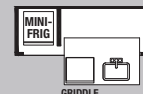
30 DBSC • 31 BHSC

MICRO OUTSIDE KITCHEN OPTION W/ INDUCTION



25 RLC

MINI CAMP KITCHEN OPTION W/ GRIDDLE



20 MBC • 22 DBC • 22 RBC
27 RBQC • 30 DBSC • 31 BHSC

MICRO OUTSIDE KITCHEN OPTION W/ GRIDDLE



22 FKC

BUNK MODELS

XLE LITE TRAVEL TRAILERS	20 MBC	22 DBC	22 RBC	27 RBQC	30 DBSC	31 BHSC
Hitch Weight	450	715	435	687	754	912
Axle Weight	3970	4425	3770	5208	5546	6996
UVW	4458	5178	4243	5933	6338	7946
GVWR	6000	6700	5800	7687	8000	9600
CCC (Cargo Cap.)	1542	1522	1557	1754	1662	1654
Exterior Length	25' 10"	26' 7"	25' 10"	33' 0"	33' 5"	35' 4"
Exterior Height w/AC	10' 2"	10' 2"	10' 2"	11' 1"	11' 1"	11' 1"
Exterior Width	96"	96"	96"	96"	96"	96"
Fresh Water Cap. (gal)	43	43	43	43	43	43
Black Water Cap. (gal)	34.5	34.5	34.5	30	34.5	30
Grey Water Cap. (gal)	34.5	64.5	34.5	64.5	34.5	34.5
Tire Size (in)	14"	14"	14"	15"	15"	15"
Awning Size (ft) OPT.	14'	13'	10'	21'	18'	21'

Refer to back cover for chart definitions.



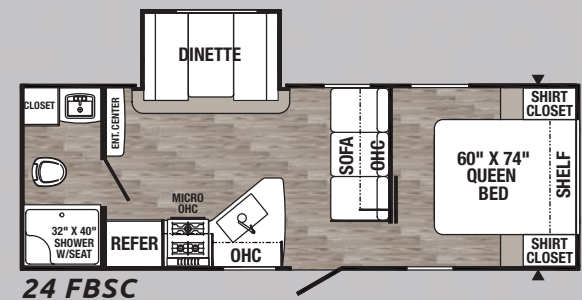
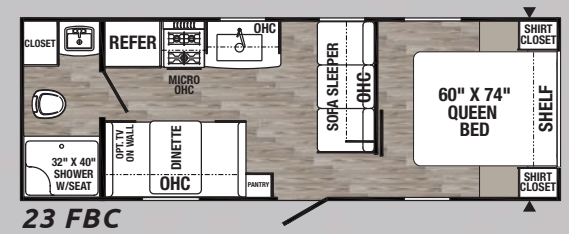
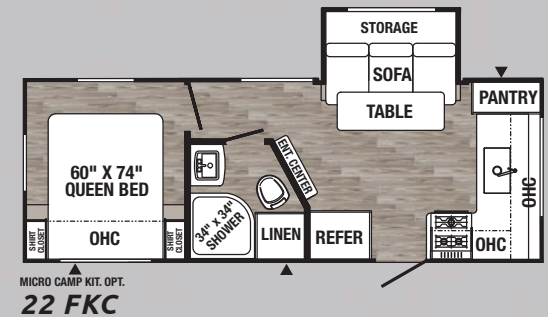
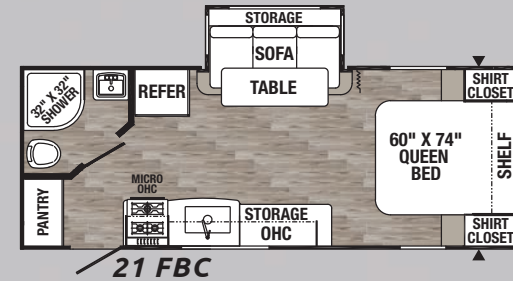
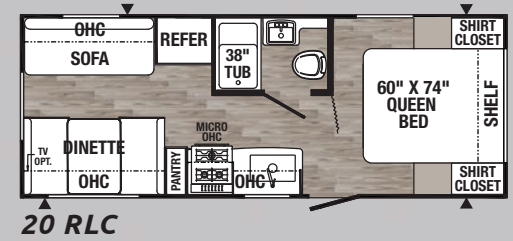
Kitchen convenience features include built-in spice storage, large pantry, nickel finish, high rise faucet, and contemporary black hardware. This galley comes complete with these stainless steel appliances: 11 cu. ft., 12V residential refrigerator, an oven and microwave. The 3-burner cooktop has a glass cover that extends workspace and LED lit controls. The front windshield provides the cook with a great view.



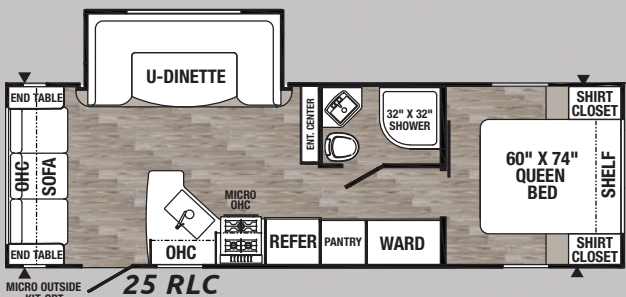
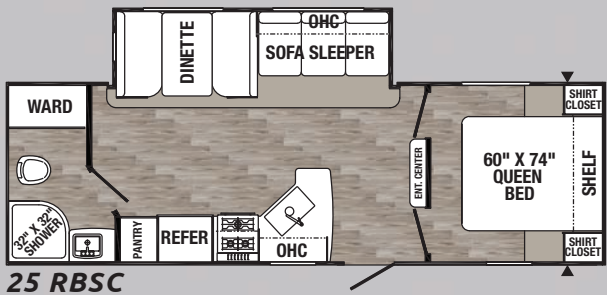
Crank up the jams! The entertainment center with FM/CD/DVD/Bluetooth stereo system has shoe and pet dish storage underneath to keep things tidy. Options shown include a 5100 BTU color changing electric fireplace and a 39" TV.



ABS radius 34" X 34" shower with a skylight for natural light and glass shower doors (Most models)



PUMA XLE LITE FEATURES



NON-BUNK MODELS

XLE LITE TRAVEL TRAILERS	20 RLC	21 FBC	22 FKC	23 FBC	24 FBSC	25 RBSC	25 RLC
Hitch Weight	380	460	700	600	556	590	682
Axle Weight	3956	4092	4715	3899	4252	5070	4928
UVW	4124	4590	5453	4537	4808	5698	5610
GVWR	6000	6200	6953	6300	6500	7300	7200
CCC (Cargo Cap.)	1876	1610	1500	1763	1654	1602	1552
Exterior Length	24' 8"	25' 3"	25' 10"	27' 4"	27' 4"	29' 6"	30' 4"
Exterior Height w/AC	10' 2"	10' 2"	10' 2"	10' 2"	10' 2"	11' 1"	10' 2"
Exterior Width	96"	96"	96"	96"	96"	96"	96"
Fresh Water Cap. (gal)	43	43	43	43	43	43	43
Black Water Cap. (gal)	34.5	34.5	30	34.5	34.5	34.5	30
Grey Water Cap. (gal)	30	34.5	64.5	34.5	34.5	30	69
Tire Size (in)	14"	14"	14"	14"	14"	15"	14"
Awning Size (ft) OPT.	10'	14'	18'	16'	16'	18'	16"

Refer to back cover for chart definitions.

TRAVEL TRAILER OPTIONS Available on select models.

OUTSIDE KITCHEN OPTION W/ GRIDDLE

30 DBSC • 31 BHSC

MINI CAMP KITCHEN OPTION W/ GRIDDLE

20 MBC • 22 DBC
22 RBC • 27 RBQC
30 DBSC • 31 BHSC

MICRO OUTSIDE KITCHEN OPTION W/ GRIDDLE

FREE STANDING TABLE & CHAIRS OPTION

22 FKC

MICRO OUTSIDE KITCHEN OPTION W/ INDUCTION

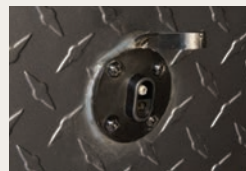
25 RLC



Convertible 84" U-dinette/sleeping area with storage, USB ports and 110V outlet



The sofa has a flip-down drink tray and additional storage



Prewired for solar power for extended stays



Stainless steel undermount sink with roll-up cover



Front and rear stabilizer jacks enhance stability



Reliable rack and pinion flush-floor slide system



Tinted windows add style and reduce interior fading



(2) 20 Lb. LP bottles with cover. (Optional lighted power jack shown)



Grey steel wheel rims with Super Lube axles and ABS molded fender skirts



Radius compartment doors are silicone sealed to protect from the elements



Bright, energy efficient LED interior lighting



Hot and cold outside shower reduces tracking dirt indoors



Back-up camera ready



3-Burner stove and 17" oven with backlit LED controls and a decorative backsplash



L-shaped galley features a single bowl sink, high rise faucet, sink cover and seamless countertops. Access storage cabinets from both front and back sides



Decorative wall art with convenient coat hooks



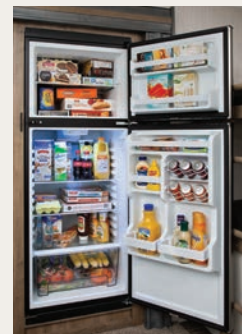
Queen bed with designer bedspread, large shirt wardrobes, and shelving (22 FKC shown)



Six gallon direct start ignition (DSI) water heater



Easy to lift under bed storage with finished edge trim is ideal for linens and big items



11 Cu. ft. 12V double door refrigerator/ freezer (Most models)



Friction hinge entry door with window and kick plate



King Jack omnidirectional HDTV antenna with built-in, long-range signal finder and WiFi prep



Smooth, aerodynamic two-tone metal enhances curb appeal. Radius compartment doors are silicone sealed to protect from the elements. Includes a 13.5K BTU air conditioner, King antenna, outside speakers and pass-through storage.

PUMA XLE LITE TOY HAULERS

GET OUT THERE WHERE THE ACTION IS WITH PUMA XLE LITE TOY HAULERS

The 27 TSB Toy Hauler, shown with the Elite Package, comes equipped with stainless steel appliances including: an 11 cu. ft. 12V residential refrigerator, microwave, and 3-burner stove with a 17" oven, LED backlit controls, and a glass range cover. Standards also include swivel rockers, night shades, a decorative backsplash, Bluetooth FM/CD/DVD stereo, exterior speakers, an electric awning, and an outside shower.

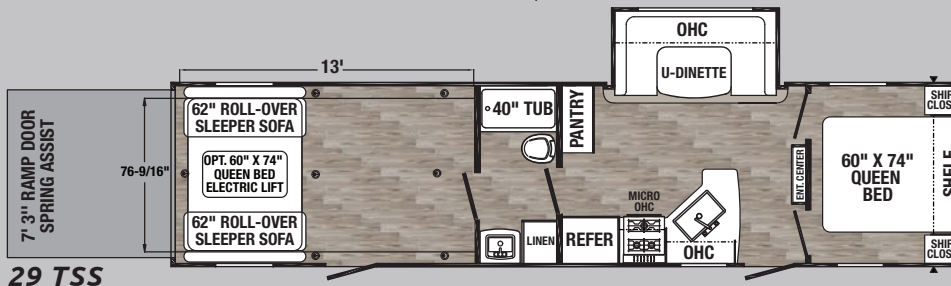
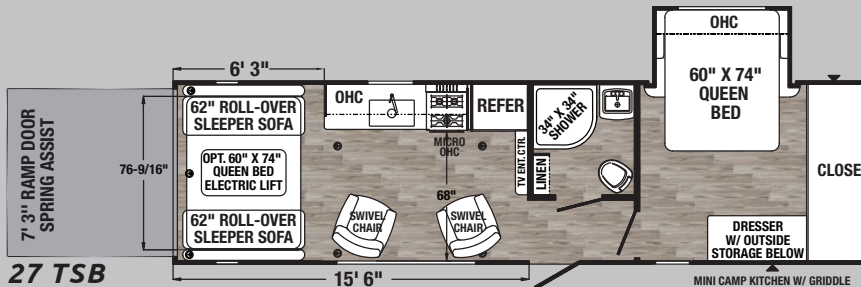
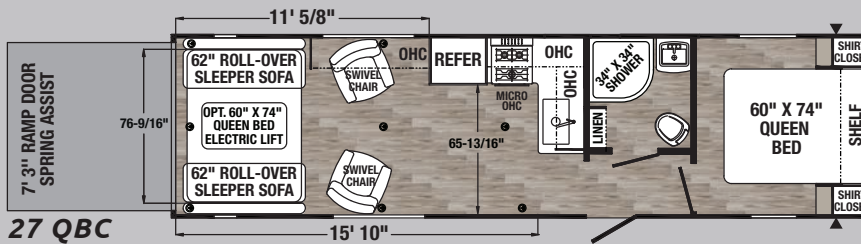
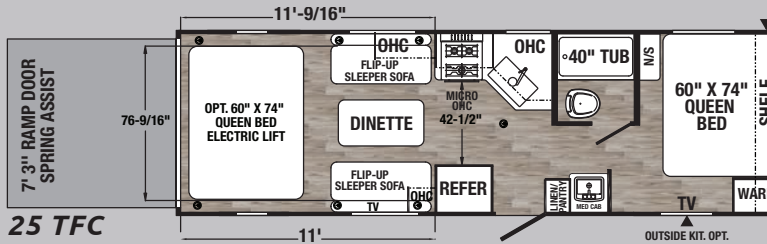
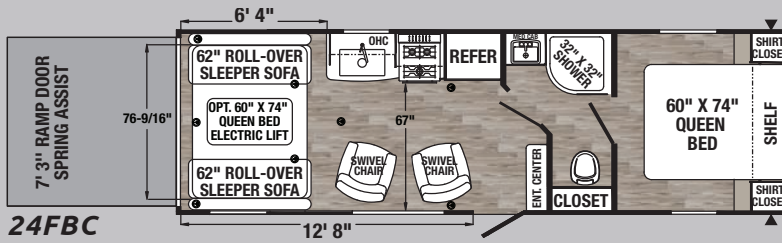


27 TSB's versatile garage area features roll-over sofas that convert to an extra sleeping area. The 7'3" door opening accommodates larger toys. A zip screen ramp door lets fresh air in and keeps insects out. The dinette table can be used indoors or out. Heavy-duty 5000 lb. D-ring tie-downs are anchored to the frame for secure travel with dovetail ramps for easy access. The cargo area can be configured to include: a double electric bed, a single electric bed or a Happi-Jac sofa with a single electric bed. TV is optional.

PUMA XLE LITE



This space saving slide out queen walk-around bed expands automatically for easy access to underbed storage with generous floor space. Pack the large, mirrored wardrobes and dresser for a long adventure.



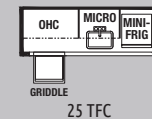
PUMA XLE TOY HAULERS	24 FBC	25 TFC	27 QBC	27 TSB	29 TSS
Hitch Weight	775	745	892	1145	1235
Axle Weight	5248	5354	5716	6085	6580
VWVW	6061	6137	6646	7268	7853
GVWR	7775	8800	9200	9995	11435
CCC (Cargo Cap.)	1714	2663	2554	2727	3582
Exterior Length	29' 7"	29' 7"	33' 11"	33' 5"	37' 4"
Exterior Height w/AC	12' 2"	12' 2"	12' 2"	12' 2"	12' 2"
Exterior Width	96"	96"	96"	96"	96"
Fresh Water Cap. (gal)	43	43	43	43	43
Black Water Cap. (gal)	34.5	34.5	34.5	34.5	34.5
Grey Water Cap. (gal)	34.5	34.5	34.5	34.5	34.5
Tire Size (in)	15"	15"	15"	15"	15"
Awning Size (ft) OPT.	18'	14'	19'	21'	21'

Refer to back cover for chart definitions.

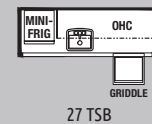
TOY HAULER OPTIONS

Available on select models.

OUTSIDE KITCHEN OPTION W/ GRIDDLE



OUTSIDE KITCHEN OPTION W/ GRIDDLE





Optional Micro kitchen has a pull-out induction cooktop, removable sink with sprayer, and a 1.6 cu. ft. refrigerator. (Select models)

OUTDOOR KITCHEN OPTIONS



This mini kitchen option includes a griddle, a 1.6 cu. ft. refrigerator, a removable sink, and handy storage drawer. (Select models)



Optional outdoor kitchen has plenty of storage, both overhead and under the counter, a 3.2 cu. ft. refrigerator, a griddle, hot and cold running water, plus a handy USB wireless charging dock with expansion capabilities. (Select models)

LIGHTEN UP – ENJOY LIFE

Puma XLE Lite offers a broad range of value added lighter weight floorplans that are loaded with convenience features. They're a perfect fit for couples and families for weekend getaways. Our well-planned packages offer a popular selection of user-friendly amenities that RV enthusiasts prefer. Interiors include durable Beauflor in tile pattern and efficient LED lighting throughout.

PUMA

XLE LITE

Puma XLE Lite by Palomino,
a Division of Forest River, Inc.
2551 Century Drive • Goshen, IN 46528
www.palominorv.com

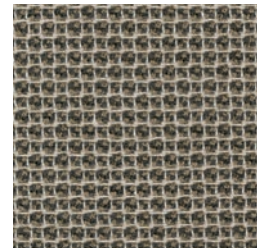
YOUR PUMA XLE AND ULTRA LITE DEALER



DECOR CHOICES

Puma offers two contemporary decor packages

GRANITE



STARDUST



FLOORING




Beauflor® tile linoleum has a 7-year cold crack warranty




PRE-DELIVERY INSPECTION FACILITY

20,000 square feet of quality assurance. The bare essentials for a premium product. This state-of-the-art facility gives immediate daily feedback to production for quality assurance in every unit built.



24/7 EMERGENCY ROADSIDE ASSISTANCE WITH VEHICLE PURCHASE*

<p>TOWING JUMP-STARTS TIRE CHANGES FLUID DELIVERY LOCKOUT SERVICE</p>	<p>WINCH-OUT MOBILE MECHANIC TECHNICAL SUPPORT DEALER LOCATOR SERVICES</p>
---	--



*VALID FOR 1 YEAR FROM DATE OF PURCHASE



Learn More
Scan this barcode using a QR Reader on your smart phone to learn more about Forest River.



A Berkshire Hathaway company.

FREE MEMBERSHIP

to Forest River Owners' Group



www.forestriverfrog.com

Find us on Facebook

GVWR (Gross Vehicle Weight Rating) - is the maximum permissible weight of the unit when fully loaded. It includes all weights, inclusive of all fluids, cargo, optional equipment and accessories. For safety and product performance do NOT exceed the GVWR.

GAWR (Gross Axle Weight Rating) - is the maximum permissible weight, including cargo, fluids, optional equipment and accessories that can be safely supported by a combination of all axles.

UVW (Unloaded Vehicle Weight)* - is the typical weight of the unit as manufactured at the factory. It includes all weight at the unit's axle(s) and tongue or pin and LP Gas. The UVW does not include cargo, fresh potable water, additional optional equipment or dealer installed accessories.

*Estimated Average based on standard build optional equipment.

CCC (Cargo Carrying Capacity)** - is the amount of weight available for fresh potable water, cargo, additional optional equipment and accessories. CCC is equal to GVWR minus UVW. Available CCC should accommodate fresh potable water (8.3 lbs per gallon). Before filling the fresh water tank, empty the black and gray tanks to provide for more cargo capacity.

**Estimated average based on standard build optional equipment.

Each Forest River RV is weighed at the manufacturing facility prior to shipping. A label identifying the unloaded vehicle weight of the actual unit and the cargo carrying capacity is applied to every Forest River RV prior to leaving our facilities. The load capacity of your unit is designated by weight, not by volume, so you cannot necessarily use all available space when loading your unit.

All information contained in this brochure is believed to be accurate at the time of publication. However, during the model year, it may be necessary to make revisions and Forest River, Inc., reserves the right to make all such changes without notice, including prices, colors, materials, equipment and specifications as well as the addition of new models and the discontinuance of models shown in this brochure. Therefore, please consult with your Forest River dealer and confirm the existence of any materials, design or specifications that are material to your purchase decision. ©2019 Puma by Palomino a Division of Forest River, Inc., a Berkshire Hathaway company. All Rights Reserved. 3/20