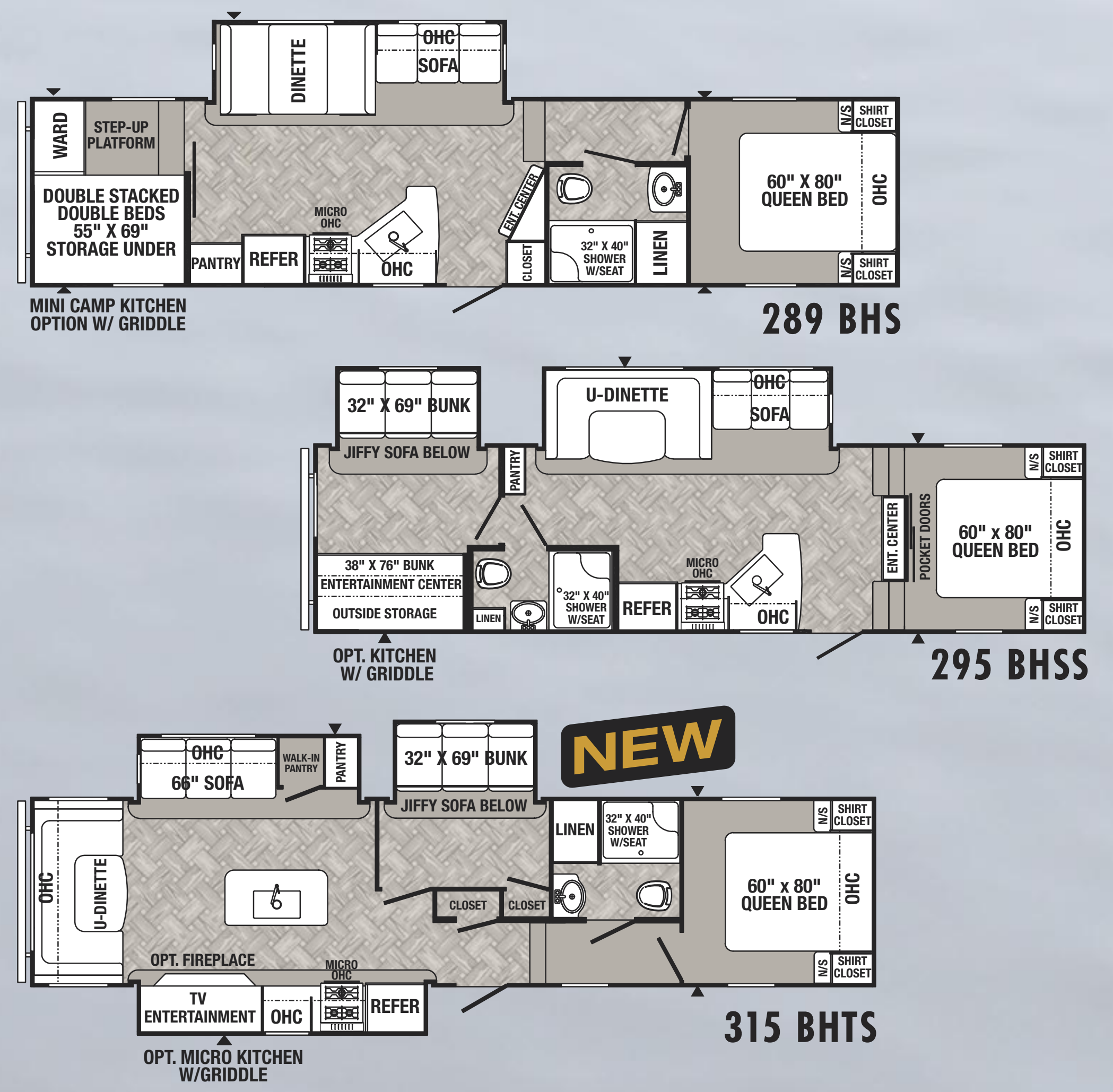
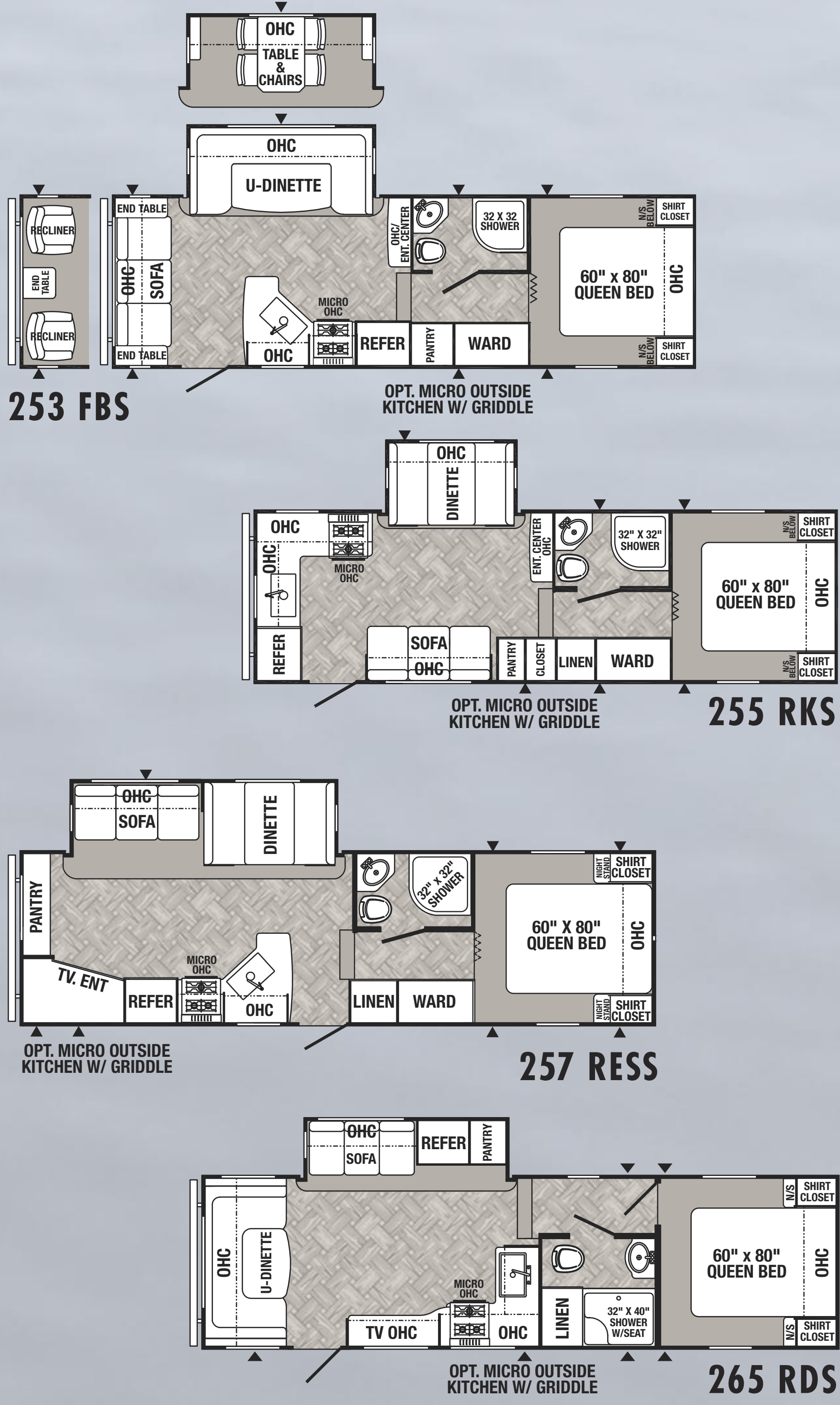


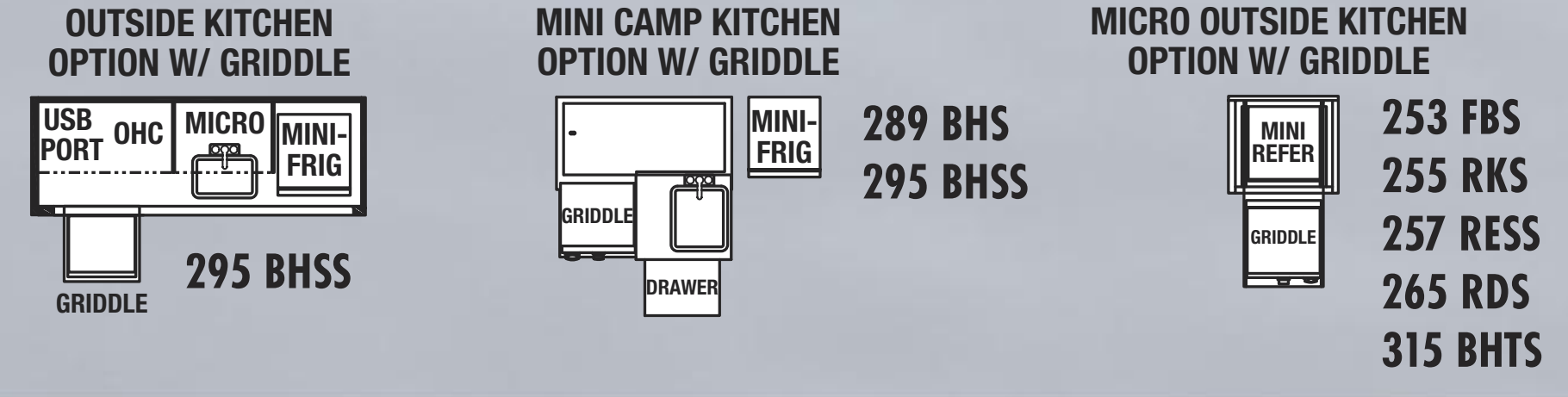
PUMA FIFTH WHEELS



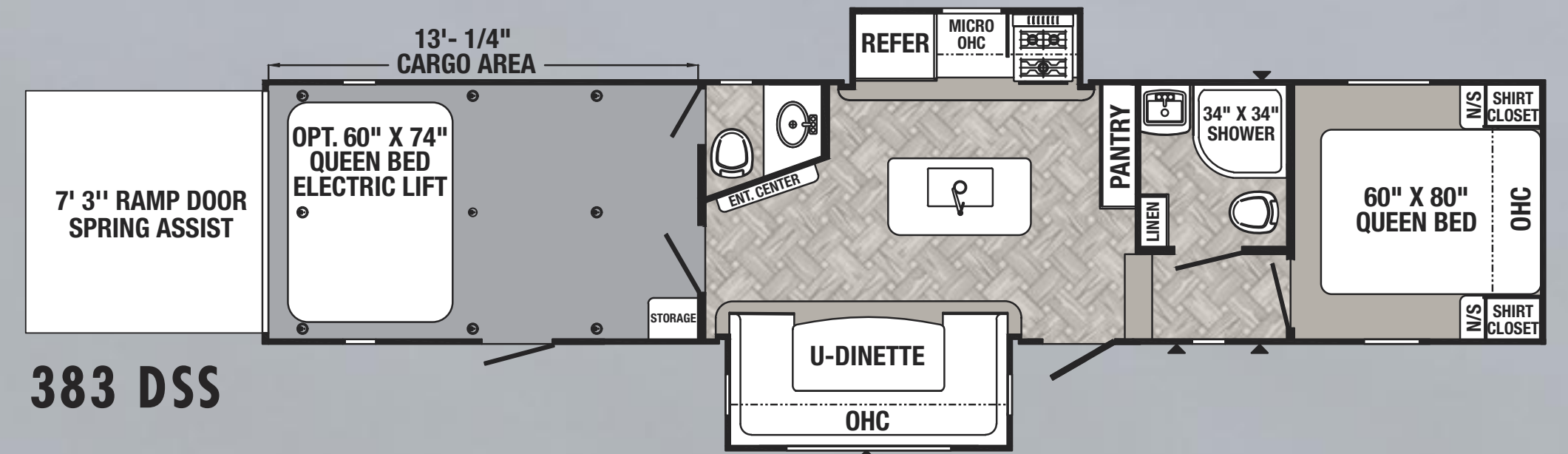
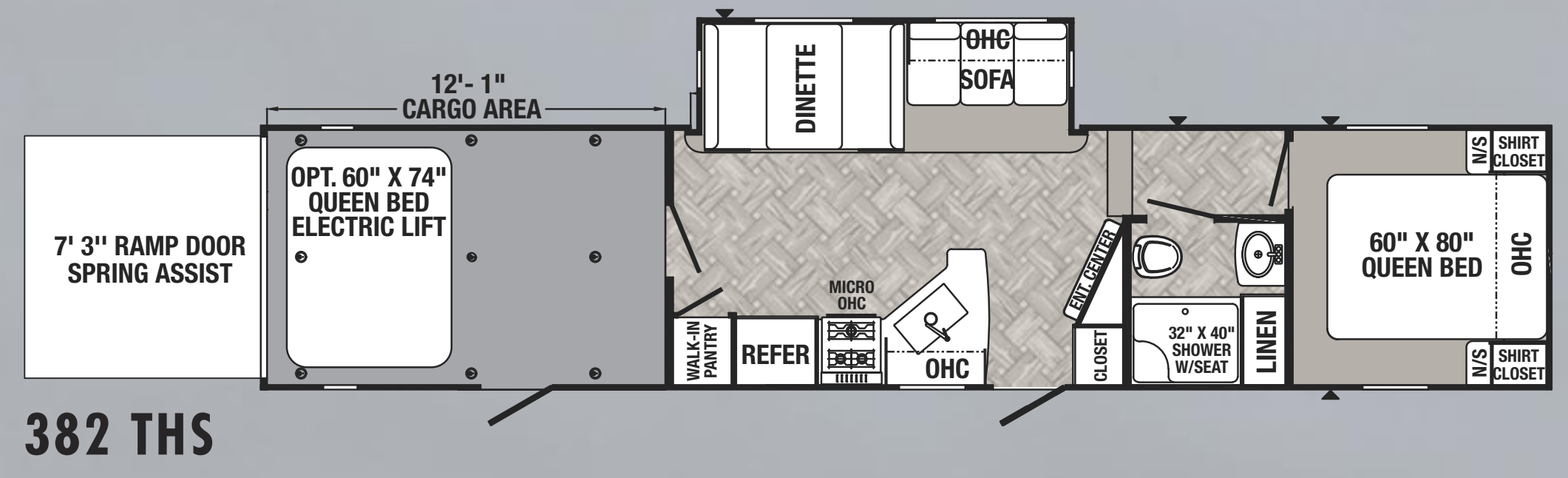
BY PALOMINO - SINCE 1968



FIFTH WHEEL OPTIONS Available on select models.



UNLEASHED TOY HAULERS



PUMA FIFTH WHEELS

MODEL	253 FBS	255 RKS	257 RESS	265 RDS	289 BHS	295 BHSS	315 BHTS
Hitch Weight (lbs)	1128	1102	1262	1135	1455	1358	1560
Axle Weight (lbs)	5757	5614	6186	6086	6875	7336	7720
UVW (lbs)	6788	6754	7419	7259	8389	8732	9318
GVWR (lbs)	8800	8800	9400		10350	10750	11760
Cargo Capacity (lbs)	2012	2046	1981	2000	1961	2018	2442
Exterior Length	28' 6"	28' 5"	30' 8"	30' 5"	34' 11"	34' 4"	38' 6"
Exterior Height w/AC	12' 2"	12' 2"	12' 2"	12' 2"	12' 2"	12' 4"	12' 4"
Water Heater Cap. (gal)	6	6	6	6	6	6	6
Fresh Water Cap. (gal)	43	43	43	43	43	43	43
Black Water Cap. (gal)	32	32	32	30	35	32	64
Grey Water Cap. (gal)	70	70	70	35	70	35	94
Tire Size (in)	15"	15"	15"	15"	15"	15"	15"
Awning Size (ft)	17'	18'	18'	17'	18'	18'	21'

PUMA UNLEASHED TOY HAULERS

MODEL	382 THS	383 DSS
Hitch Weight (lbs)	1900	1895
Axle Weight (lbs)	8280	8825
UVW (lbs)	10218	10758
GVWR (lbs)	13900	13895
Cargo Capacity	3682	3137
Exterior Length	39' 10"	39' 10"
Exterior Height w/AC	12' 8"	12' 8"
Water Heater Cap. (gal)	12	12
Fresh Water Cap. (gal)	100	100
Black Water Cap. (gal)	35	67
Grey Water Cap. (gal)	70	67
Tire Size (in)	16"	16"
Awning Size (ft)	21'	21'

PUMA UNLEASHED TOY HAULER HEIGHTS INCLUDING OPTIONS (FROM FLOOR)

MODEL	ONE ELECTRIC BED	TWO ELECTRIC BEDS	ENTRANCE AT DOOR	TO BOTTOM OF AC	TO CEILING
382 THS	84"	75"	84"	86"	88.5"
383 DSS	84"	75"	84"	86"	88.5"



PUMA by Palomino, a Division of Forest River, Inc.

2551 Century Drive • Goshen, IN 46528 • <https://palominorv.com/puma>

CUSTOMER SATISFACTION FOREST RIVER BUY LOCAL

Learn More QR Reader on your smart phone to learn more about Forest River.

Find us on Facebook

GVWR (Gross Vehicle Weight Rating) - is the maximum permissible weight of the unit when fully loaded. It includes all fluids, cargo, optional equipment and accessories. For safety and product performance do NOT exceed the GVWR.
 GVWR (Gross Axle Weight Rating) - is the maximum permissible weight including cargo, fluids, optional equipment and accessories that can be safely supported by a combination of all axles.
 UVW (Unloaded Vehicle Weight) - is the typical weight of the unit as manufactured at the factory. It includes all weight at the unit's make-up and tongue or pin and LP Gas. The UVW does not include cargo, fresh potable water, additional optional equipment or dealer installed accessories.
 *Estimated weights based on standard build optional equipment.
 CCC (Cargo Carrying Capacity) - is the amount of weight available for fresh potable water, cargo, additional optional equipment and accessories. CCC is equal to GVWR minus UVW. Available CCC should accommodate fresh potable water (8.3 lbs per gallon). Before filling the fresh water tank, empty the black and grey tanks to provide for more cargo capacity.
 Each Forest River RV is weighed at the manufacturing facility prior to shipping. A label identifying the unloaded vehicle weight of the actual unit and the cargo carrying capacity is applied to every Forest River RV prior to leaving our facilities. The load capacity of your unit is designed by weight, not by volume, so you cannot necessarily use all available space when loading your unit.
 All information contained in this brochure is believed to be accurate at the time of publication. However, during the model year, it may be necessary to make revisions and Forest River, Inc., reserves the right to make all such changes without notice, including price, colors, materials, equipment and specifications as well as the addition of new models and the discontinuation of models shown in this brochure. Therefore, please consult with your Forest River dealer and confirm the existence of any materials, design or specifications that are intended by your purchase decision. ©2021 Puma by Palomino a Division of Forest River, Inc., a Berkshire Hathaway company. All Rights Reserved. 10/21